



WHITE SHAKER



WHITE SHAKER

WHITE SHAKER

Bright, Simple, and Modern

Our most popular style. Transform your space into a modern haven, where the clean lines and bright finish create a fresh and inviting atmosphere for your home.



WHITE SHAKER



White Shaker 's distinct design is characterized by clean and simple lines making it a perfect choice for those looking to achieve a clean and uncluttered look. The absence of harsh lines in the door design makes it suitable for traditional and modern design aesthetics.



WHITE SHAKER



DARK CARAMEL

Rich, Stylish, and Timeless

Our Dark Caramel cabinets bring warmth and richness to any space. Elevate your kitchen with the luxurious allure of deep caramel tones, creating a welcoming and stylish focal point that embodies both contemporary design and classic sophistication.





The dark and warm tones make it a versatile option blending effortlessly with contemporary, traditional and rustic styles. Its deep and inviting hue creates a cozy and comfortable environment, transforming any space into a soulful retreat.

DOVE GREY

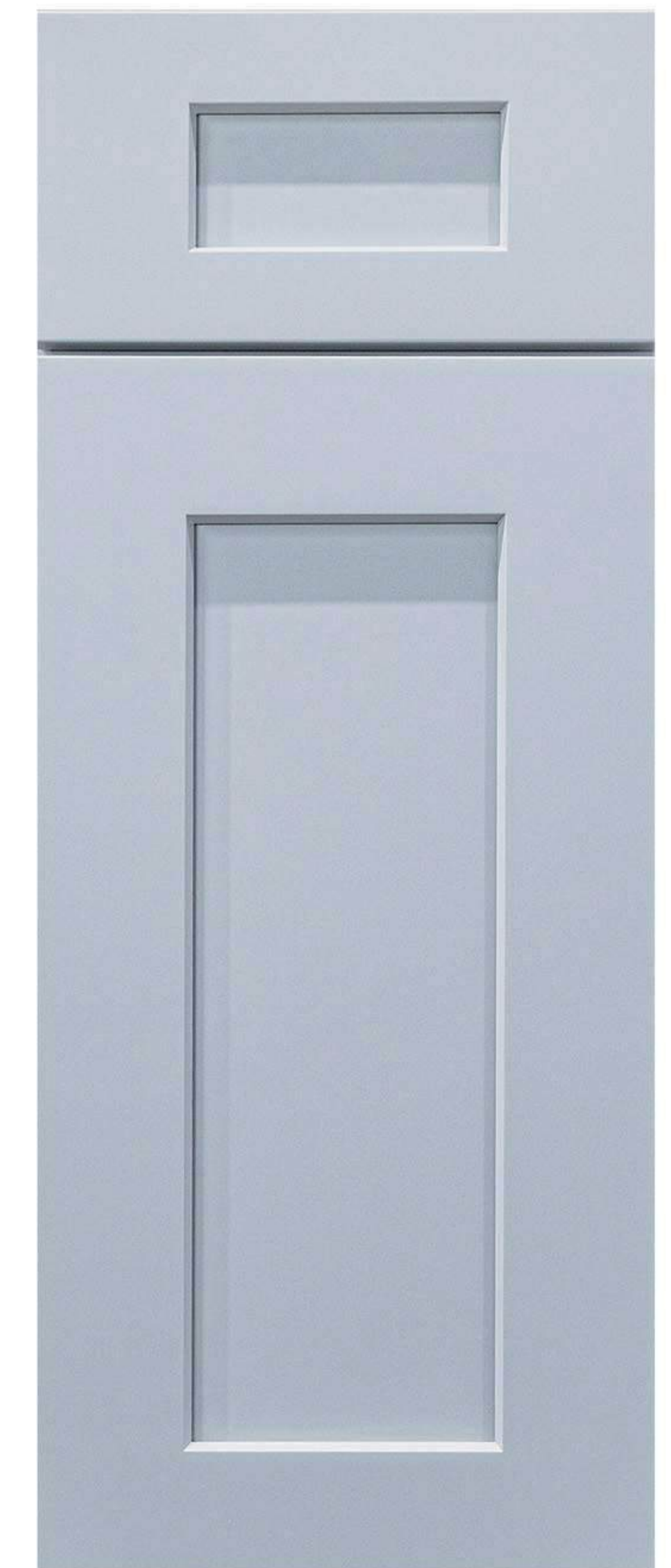


DOVE GREY

DOVE GREY

Soft, Clean, and Fresh

Our second most popular style adds a sense of quiet sophistication to any space. It can be used as the primary color throughout the kitchen, or as a muted accent when combined with other cabinet styles or colors.





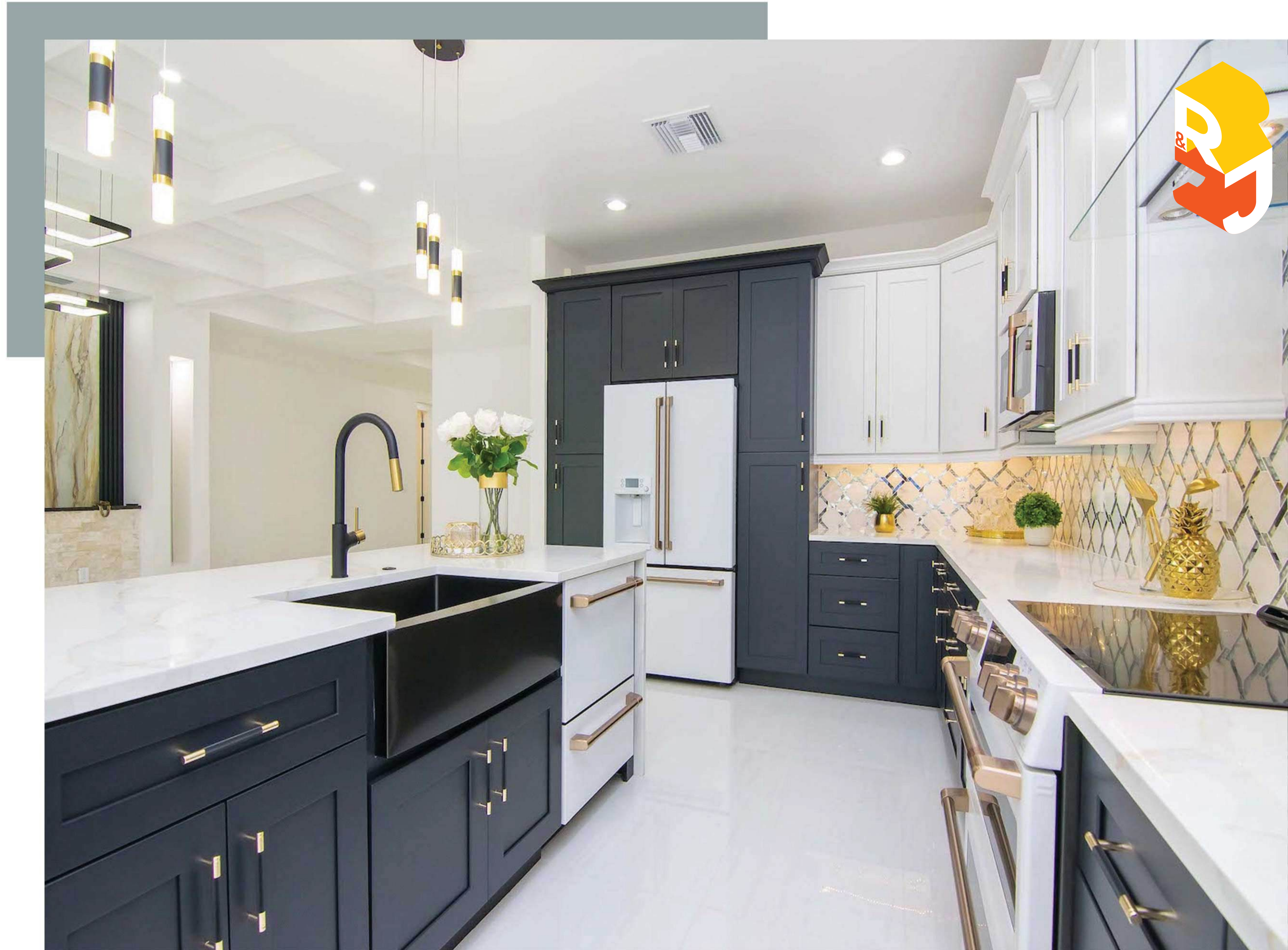
Dove Grey offers a sophisticated alternative to bright white, transforming your kitchen into an oasis of calm.

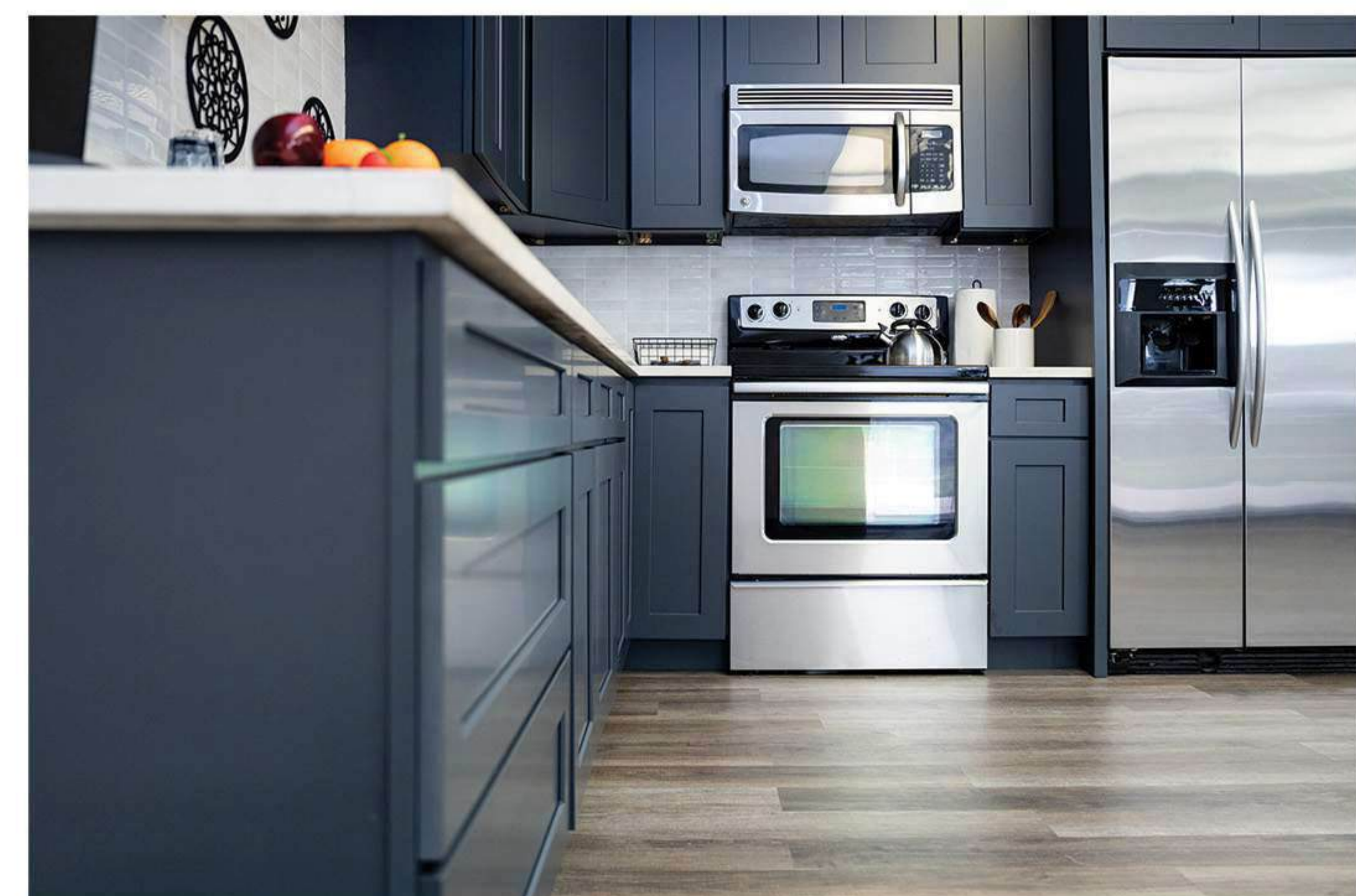
Whether used as the central theme or a subtle accent, Dove Grey cabinets bring a sense of refinement and tranquility to your

CYBER GREY

Contemporary, Sleek, and Sophisticated

Our Cyber Grey Shaker cabinets boast a sleek and contemporary design, seamlessly merging modern aesthetics with classic Shaker-style simplicity. The deep, rich hue of Cyber Grey adds a touch of sophistication to any kitchen, creating a stylish and timeless atmosphere.







GLACIER WHITE

Charming, Formal, and Vintage

Our Glacier White cabinets exude timeless elegance with their raised panel detailing, adding a touch of sophistication to any kitchen.





Our Glacier White cabinet represents the middle ground between the simplicity of the shaker design and the more intricate raised panel designs.

Striking a balance between modern and vintage design elements, it's perfect for those who want to maintain a consistent and bright color scheme while introducing a unique vintage door design. The blending of features makes Glacier White a versatile choice that can enhance the charm of bathrooms, kitchens, or any area in need of cabinets within your home.

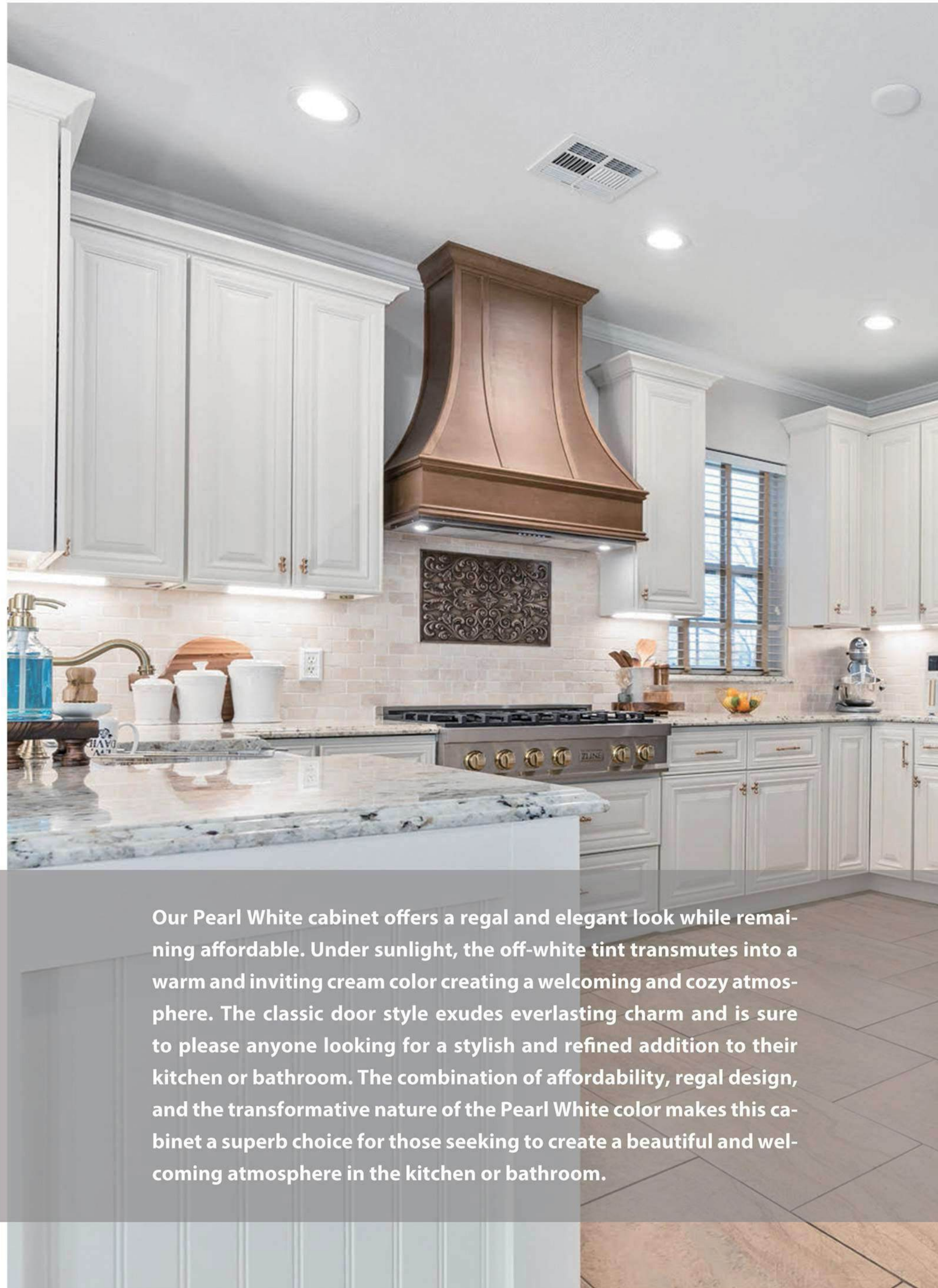


PEARL WHITE

Elegant, Warm, and Classic

Our Pearl White cabinets offer a luxurious and refined look with their exquisite raised panel detailing, elevating the elegance of any kitchen space. The lustrous pearl white finish adds a touch of opulence, creating a sophisticated ambiance that seamlessly blends traditional charm and contemporary style.





Our Pearl White cabinet offers a regal and elegant look while remaining affordable. Under sunlight, the off-white tint transmutes into a warm and inviting cream color creating a welcoming and cozy atmosphere. The classic door style exudes everlasting charm and is sure to please anyone looking for a stylish and refined addition to their kitchen or bathroom. The combination of affordability, regal design, and the transformative nature of the Pearl White color makes this cabinet a superb choice for those seeking to create a beautiful and welcoming atmosphere in the kitchen or bathroom.





VERSA SHAKER

Natural, Versatile, and Vogue

Versa Shaker, a canvas for your personalized design vision. Whether you prefer a rustic farmhouse aesthetic or a sleek modern look, the natural charm and adaptability of these cabinets allow you to infuse your space with character and warmth, making any kitchen uniquely yours.





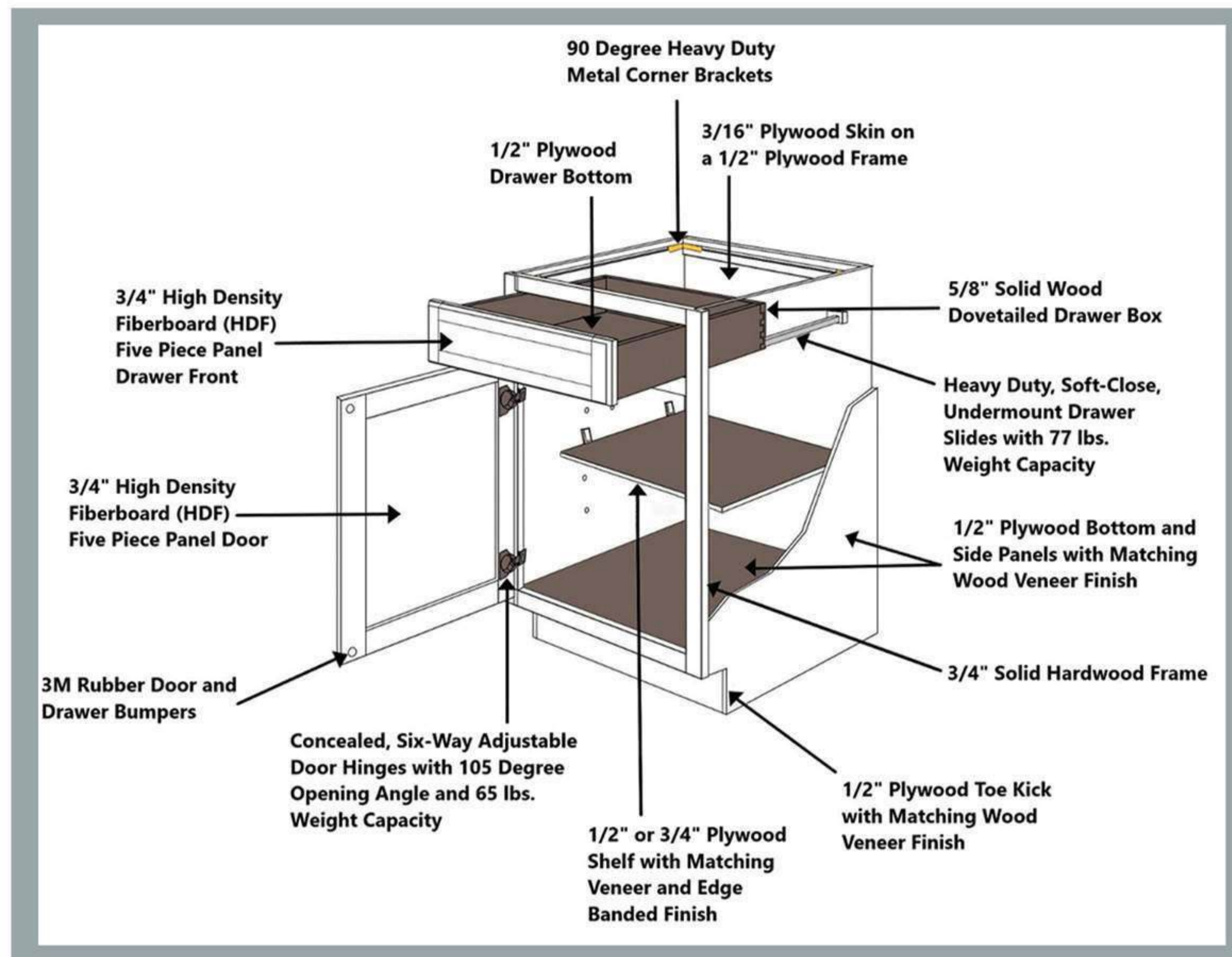
Our Versa Shaker cabinet is perfect for those who appreciate the authenticity of natural materials. Designed to cater to those seeking alternatives beyond traditional painted and stained finishes.



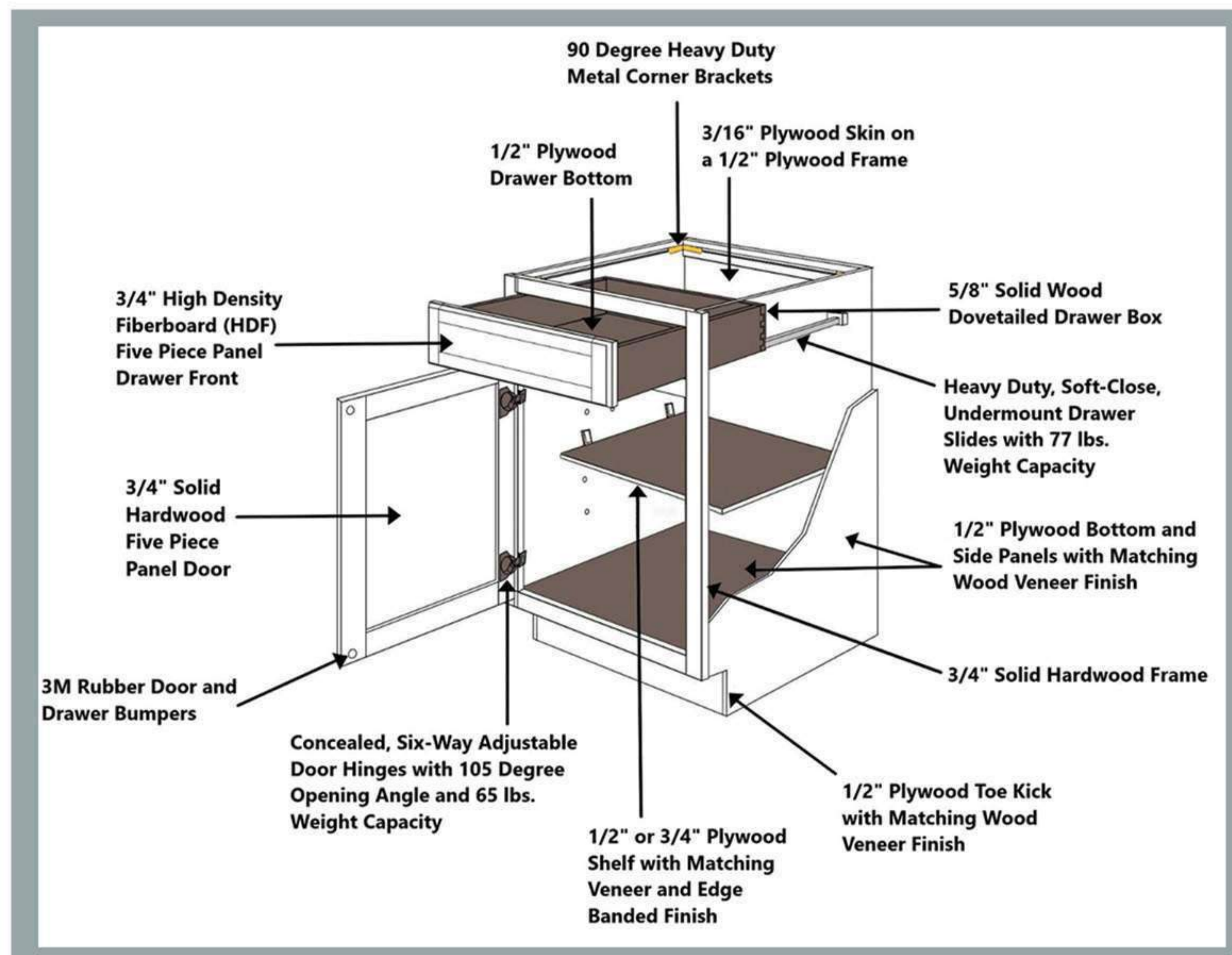
The raw wood can be sealed and installed as is, allowing the wood's natural beauty to take center stage while maintaining a contemporary vibe.

Whether you're aiming for a traditional, rustic, or a more modern aesthetic, the Versa Shaker cabinet provides the foundation for your vision to come to life.





Base Cabinet Construction (HDF Door)



Base Cabinet Construction (Wood Door)



| Sink Base Cabinets | | | | | | | |
|--------------------------------|---------|-------|---------|-------|-------|-----------|---------|
| Image | Product | Width | Height | Depth | Doors | Drawers | Shelves |
| | SB30 | 30" | 34 1/2" | 24" | 2 | 1 (False) | 0 |
| | SB36 | 36" | 34 1/2" | 24" | 2 | 2 (False) | 0 |
| | FSB36 | 36" | 34 1/2" | 24" | 2 | 0 | 0 |
| Full Height Door Base Cabinets | | | | | | | |
| Image | Product | Width | Height | Depth | Doors | Drawers | Shelves |
| | FDB18 | 18" | 34 1/2" | 24" | 1 | 0 | 1 |
| | FDB21 | 21" | 34 1/2" | 24" | 1 | 0 | 1 |
| | FDB24 | 24" | 34 1/2" | 24" | 2 | 0 | 1 |
| | FDB27 | 27" | 34 1/2" | 24" | 2 | 0 | 1 |
| | FDB30 | 30" | 34 1/2" | 24" | 2 | 0 | 1 |
| | FDB33 | 33" | 34 1/2" | 24" | 2 | 0 | 1 |
| | FDB36 | 36" | 34 1/2" | 24" | 2 | 0 | 1 |

| Standard Base Cabinets | | | | | | | |
|------------------------|---------|-------|---------|-------|-------|---------|---------|
| Image | Product | Width | Height | Depth | Doors | Drawers | Shelves |
| | B12 | 12" | 34 1/2" | 24" | 1 | 1 | 1 |
| | B15 | 15" | 34 1/2" | 24" | 1 | 1 | 1 |
| | B18 | 18" | 34 1/2" | 24" | 1 | 1 | 1 |
| | B21 | 21" | 34 1/2" | 24" | 1 | 1 | 1 |
| | B24 | 24" | 34 1/2" | 24" | 2 | 1 | 1 |
| | B27 | 27" | 34 1/2" | 24" | 2 | 1 | 1 |
| | B30 | 30" | 34 1/2" | 24" | 2 | 1 | 1 |
| | | | | | | | |
| | B33 | 33" | 34 1/2" | 24" | 2 | 2 | 1 |
| | B36 | 36" | 34 1/2" | 24" | 2 | 2 | 1 |
| | B39 | 39" | 34 1/2" | 24" | 2 | 2 | 1 |
| | B42 | 42" | 34 1/2" | 24" | 2 | 2 | 1 |

| Drawer Base Cabinets | | | | | | | |
|----------------------|---------|---------|---------|-------|-------|---------|---------|
| Image | Product | Width | Height | Depth | Doors | Drawers | Shelves |
| | 2DB30 | 30" | 34 1/2" | 24" | 0 | 2 | 0 |
| | 2DB33 | 33" | 34 1/2" | 24" | 0 | 2 | 0 |
| | 2DB36 | 36" | 34 1/2" | 24" | 0 | 2 | 0 |
| | DB12 | 12" | 34 1/2" | 24" | 0 | 3 | 0 |
| | DB15 | 15" | 34 1/2" | 24" | 0 | 3 | 0 |
| | DB18 | 18" | 34 1/2" | 24" | 0 | 3 | 0 |
| | DB21 | 21" | 34 1/2" | 24" | 0 | 3 | 0 |
| | DB24 | 24" | 34 1/2" | 24" | 0 | 3 | 0 |
| | DB27 | 27" | 34 1/2" | 24" | 0 | 3 | 0 |
| | DB30 | 30" | 34 1/2" | 24" | 0 | 3 | 0 |
| | DB33 | 33" | 34 1/2" | 24" | 0 | 3 | 0 |
| DB36 | 36" | 34 1/2" | 24" | 0 | 3 | 0 | |

| Corner Base Cabinets | | | | | | | |
|----------------------|--|-------|---------|-------|------------|---------|----------------|
| Image | Product | Width | Height | Depth | Doors | Drawers | Shelves |
| | BBC33-9 | 33" | 34 1/2" | 24" | 1 | 1 | 1 |
| | Note: Cabinet must be installed 9" from the wall. | | | | | | |
| | LZS33 | 33" | 34 1/2" | 24" | 1 (Bifold) | 0 | 2 (Turntables) |
| | LZS3612 | 36" | 34 1/2" | 24" | 1 (Bifold) | 0 | 2 (Turntables) |

| Specialty Base Cabinets | | | | | | | |
|-------------------------|---|-------|---------|-------|-------|---------|---------|
| Image | Product | Width | Height | Depth | Doors | Drawers | Shelves |
| | BES09 | 9" | 34 1/2" | 24" | 0 | 0 | 2 |
| | | | | | | | |
| | BMC30 | 30" | 34 1/2" | 24" | 0 | 1 | 0 |
| | | | | | | | |
| | BWBKT18 | 18" | 34 1/2" | 24" | 0 | 2 | 0 |
| | Note: Trash cans for inside the cabinet are sold separately. | | | | | | |
| | SP09 | 9" | 34 1/2" | 24" | 0 | 1 | 3 |
| | | | | | | | |

SPECIFICATION DRAWING

| Standard Wall Cabinets | | | | | | |
|------------------------|---------|-------|--------|-------|-------|---------|
| Image | Product | Width | Height | Depth | Doors | Shelves |
| | W0930 | 9" | 30" | 12" | 1 | 2 |
| | W1230 | 12" | 30" | 12" | 1 | 2 |
| | W1530 | 15" | 30" | 12" | 1 | 2 |
| | W1830 | 18" | 30" | 12" | 1 | 2 |
| | W2130 | 21" | 30" | 12" | 1 | 2 |
| | W0936 | 9" | 36" | 12" | 1 | 2 |
| | W1236 | 12" | 36" | 12" | 1 | 2 |
| | W1536 | 15" | 36" | 12" | 1 | 2 |
| | W1836 | 18" | 36" | 12" | 1 | 2 |
| | W2136 | 21" | 36" | 12" | 1 | 2 |
| | W0942 | 9" | 42" | 12" | 1 | 3 |
| | W1242 | 12" | 42" | 12" | 1 | 3 |
| | W1542 | 15" | 42" | 12" | 1 | 3 |
| | W1842 | 18" | 42" | 12" | 1 | 3 |
| | W2142 | 21" | 42" | 12" | 1 | 3 |
| | W2430 | 24" | 30" | 12" | 2 | 2 |
| | W2730 | 27" | 30" | 12" | 2 | 2 |
| | W3030 | 30" | 30" | 12" | 2 | 2 |
| | W3330 | 33" | 30" | 12" | 2 | 2 |
| | W3630 | 36" | 30" | 12" | 2 | 2 |
| | W2436 | 24" | 36" | 12" | 2 | 2 |
| | W2736 | 27" | 36" | 12" | 2 | 2 |
| | W3036 | 30" | 36" | 12" | 2 | 2 |
| | W3336 | 33" | 36" | 12" | 2 | 2 |
| | W3636 | 36" | 36" | 12" | 2 | 2 |
| | W2442 | 24" | 42" | 12" | 2 | 3 |
| | W2742 | 27" | 42" | 12" | 2 | 3 |
| | W3042 | 30" | 42" | 12" | 2 | 3 |
| | W3342 | 33" | 42" | 12" | 2 | 3 |
| | W3642 | 36" | 42" | 12" | 2 | 3 |



SPECIFICATION DRAWING

| Standard Corner Wall Cabinets | | | | | | |
|-------------------------------|-----------|-------|--------|-------|-------|---------|
| Image | Product | Width | Height | Depth | Doors | Shelves |
| | WDC243012 | 24" | 30" | 12" | 1 | 2 |
| | WDC243612 | 24" | 36" | 12" | 1 | 2 |
| | WDC244212 | 24" | 42" | 12" | 1 | 3 |
| | | | | | | |
| | WBC2730 | 27" | 30" | 12" | 1 | 2 |
| | WBC2736 | 27" | 36" | 12" | 1 | 2 |
| | WBC2742 | 27" | 42" | 12" | 1 | 3 |
| | | | | | | |

| Short Wall Cabinets | | | | | | |
|---------------------|---------|-------|--------|-------|-------|---------|
| Image | Product | Width | Height | Depth | Doors | Shelves |
| | W2412 | 24" | 12" | 12" | 2 | 0 |
| | W3012 | 30" | 12" | 12" | 2 | 0 |
| | W3312 | 33" | 12" | 12" | 2 | 0 |
| | W3612 | 36" | 12" | 12" | 2 | 0 |
| | | | | | | |
| | W2415 | 24" | 15" | 12" | 2 | 0 |
| | W3015 | 30" | 15" | 12" | 2 | 0 |
| | W3315 | 33" | 15" | 12" | 2 | 0 |
| | W3615 | 36" | 15" | 12" | 2 | 0 |
| | | | | | | |
| | W1218 | 12" | 18" | 12" | 1 | 0 |
| | W1518 | 15" | 18" | 12" | 1 | 0 |
| | W1818 | 18" | 18" | 12" | 1 | 0 |
| | W2118 | 21" | 18" | 12" | 1 | 0 |
| | | | | | | |
| | W2418 | 24" | 18" | 12" | 2 | 0 |
| | W2718 | 27" | 18" | 12" | 2 | 0 |
| | W3018 | 30" | 18" | 12" | 2 | 0 |
| | W3318 | 33" | 18" | 12" | 2 | 0 |
| | W3618 | 36" | 18" | 12" | 2 | 0 |
| | W2424 | 24" | 24" | 12" | 2 | 1 |
| | W3024 | 30" | 24" | 12" | 2 | 1 |
| | W3324 | 33" | 24" | 12" | 2 | 1 |
| | W3624 | 36" | 24" | 12" | 2 | 1 |
| | | | | | | |

| Short Corner Wall Cabinets | | | | | | |
|----------------------------|-----------|-------|--------|-------|-------|---------|
| Image | Product | Width | Height | Depth | Doors | Shelves |
| | WDC241812 | 24" | 18" | 12" | 1 | 0 |
| | | | | | | |
| | | | | | | |
| | | | | | | |
| | | | | | | |

| Deep Wall Cabinets | | | | | | |
|--------------------|---------|-------|--------|-------|-------|---------|
| Image | Product | Width | Height | Depth | Doors | Shelves |
| | W361227 | 36" | 12" | 27" | 2 | 0 |
| | W361527 | 36" | 15" | 27" | 2 | 0 |
| | W361827 | 36" | 18" | 27" | 2 | 0 |
| | | | | | | |
| | | | | | | |
| | | | | | | |
| | | | | | | |
| | | | | | | |
| | W362427 | 36" | 24" | 27" | 2 | 1 |
| | | | | | | |
| | | | | | | |
| | | | | | | |
| | | | | | | |

| Range Hood Cover | | | | | | |
|------------------|---------|-------|--------|-------|-------|---------|
| Image | Product | Width | Height | Depth | Doors | Shelves |
| | RH36 | 36" | 36" | 24" | 0 | 0 |
| | | | | | | |
| | | | | | | |
| | | | | | | |
| | | | | | | |

| Wall Shelves | | | | | | |
|--------------|----------|-------|--------|-------|-------|---------|
| Image | Product | Width | Height | Depth | Doors | Shelves |
| | WEOS0930 | 9" | 30" | 12" | 0 | 2 |
| | WEOS0936 | 9" | 36" | 12" | 0 | 2 |
| | | | | | | |
| | | | | | | |
| | | | | | | |
| | | | | | | |
| | | | | | | |
| | WEOS0942 | 9" | 42" | 12" | 0 | 3 |
| | | | | | | |
| | | | | | | |
| | | | | | | |
| | | | | | | |

| Double-Oven Cabinets | | | | | | | |
|----------------------|-----------|-------|--------|-------|-------|---------|---------|
| Image | Product | Width | Height | Depth | Doors | Drawers | Shelves |
| | OVD338427 | 33" | 84" | 27" | 2 | 1 | 0 |
| | OVD339027 | 33" | 90" | 27" | 2 | 1 | 0 |
| | OVD339627 | 33" | 96" | 27" | 2 | 1 | 1 |
| | | | | | | | |
| | | | | | | | |
| | | | | | | | |
| | | | | | | | |
| | | | | | | | |
| | | | | | | | |
| | | | | | | | |
| | | | | | | | |
| | | | | | | | |

| Counter Linen Cabinets | | | | | | | |
|------------------------|----------|-------|--------|-------|-------|---------|---------|
| Image | Product | Width | Height | Depth | Doors | Drawers | Shelves |
| | CL156012 | 15" | 60" | 12" | 1 | 2 | 3 |
| | | | | | | | |
| | | | | | | | |
| | | | | | | | |
| | | | | | | | |
| | | | | | | | |
| | | | | | | | |
| | | | | | | | |
| | | | | | | | |

| Vanity Base Cabinets | | | | | | | |
|----------------------|---------|-------|---------|-------|-------|-----------|---------|
| Image | Product | Width | Height | Depth | Doors | Drawers | Shelves |
| | VAN24 | 24" | 34 1/2" | 21" | 2 | 1 (False) | 0 |
| | VAN30 | 30" | 34 1/2" | 21" | 2 | 1 (False) | 0 |
| | VSB36 | 36" | 34 1/2" | 21" | 2 | 2 (False) | 0 |
| | | | | | | | |
| | | | | | | | |
| | | | | | | | |
| | | | | | | | |
| | | | | | | | |
| | | | | | | | |
| | | | | | | | |
| | | | | | | | |
| | | | | | | | |

| Vanity Base Cabinets | | | | | | | | |
|----------------------|---------|-------|---------|-------|-------|---------------|---------|--|
| Image | Product | Width | Height | Depth | Doors | Drawers | Shelves | |
| | VAN36DL | 36" | 34 1/2" | 21" | 2 | 2 & 2 (False) | 0 | |
| | VAN42DL | 42" | 34 1/2" | 21" | 2 | 2 & 2 (False) | 0 | |
| | VAN36DR | 36" | 34 1/2" | 21" | 2 | 2 & 2 (False) | 0 | |
| | VAN42DR | 42" | 34 1/2" | 21" | 2 | 2 & 2 (False) | 0 | |
| | | | | | | | | |
| | | | | | | | | |
| | | | | | | | | |
| | | | | | | | | |
| | | | | | | | | |
| | | | | | | | | |
| | | | | | | | | |
| | | | | | | | | |



| Dishwasher Panel | | | | |
|------------------|---------|-------|---------|-------|
| Image | Product | Width | Height | Depth |
| | DWP3 | 3" | 34 1/2" | 24" |
| | | | | |
| | | | | |
| | | | | |
| | | | | |
| | | | | |

| Panels | | | | |
|--------|------------------|-------|--------|-------|
| Image | Product | Width | Height | Depth |
| | SIDE PANEL 36X96 | 96" | 36" | 1/2" |
| | SKIN PANEL 36X96 | 96" | 36" | 3/16" |
| | | | | |
| | | | | |
| | | | | |
| | | | | |

| Toe Kick | | | | |
|----------|---------|-------|--------|-------|
| Image | Product | Width | Height | Depth |
| | TK8 | 96" | 4 1/2" | 3/16" |
| | | | | |
| | | | | |
| | | | | |
| | | | | |
| | | | | |

| Base Molding | | | | |
|--------------|-------------|-------|--------|-------|
| Image | Product | Width | Height | Depth |
| | BASEMOLDING | 96" | 4 3/8" | 3/4" |
| | | | | |
| | | | | |
| | | | | |
| | | | | |
| | | | | |

| Shoe Molding | | | | |
|--------------|-------------|-------|--------|-------|
| Image | Product | Width | Height | Depth |
| | SHOEMOLDING | 96" | 1/2" | 1/2" |
| | | | | |
| | | | | |
| | | | | |
| | | | | |
| | | | | |

| Scribe Molding | | | | |
|----------------|---------------|-------|--------|-------|
| Image | Product | Width | Height | Depth |
| | SCRIBEMOLDING | 96" | 3/4" | 1/4" |
| | | | | |
| | | | | |
| | | | | |
| | | | | |
| | | | | |

| Inside Corner Molding | | | | |
|-----------------------|---------|-------|--------|-------|
| Image | Product | Width | Height | Depth |
| | ICM8 | 96" | 1/2" | 1/2" |
| | | | | |
| | | | | |
| | | | | |
| | | | | |
| | | | | |

| Angle Molding | | | | |
|---------------|--------------|-------|--------|-------|
| Image | Product | Width | Height | Depth |
| | ANGLEMOLDING | 96" | 3/4" | 3/4" |
| | | | | |
| | | | | |
| | | | | |
| | | | | |
| | | | | |

| Crown Molding | | | | |
|---------------|---------|-------|--------|--------|
| Image | Product | Width | Height | Depth |
| | CCM8 | 96" | 3" | 4 1/4" |
| | | | | |
| | | | | |
| | | | | |
| | | | | |
| | | | | |

| Crown Molding | | | | |
|---------------|---------|-------|--------|--------|
| Image | Product | Width | Height | Depth |
| | ACM2.5 | 96" | 2" | 3 1/2" |
| | | | | |
| | | | | |
| | | | | |
| | | | | |
| | | | | |



| Traditional Light Rail Molding | | | | |
|--------------------------------|---------|-------|--------|--------|
| Image | Product | Width | Height | Depth |
| | TLR8 | 96" | 1 1/2" | 2 1/4" |
| | | | | |
| | | | | |
| | | | | |
| | | | | |
| | | | | |

| Base Decorative Door | | | | |
|----------------------|---------|---------|---------|-------|
| Image | Product | Width | Height | Depth |
| | BDD24 | 23 3/4" | 29 1/4" | 3/4" |
| | | | | |
| | | | | |
| | | | | |
| | | | | |
| | | | | |

| Wall Decorative Door | | | | |
|----------------------|---------|---------|---------|-------|
| Image | Product | Width | Height | Depth |
| | WDD30 | 11 7/8" | 29 1/2" | 3/4" |
| | WDD36 | 11 7/8" | 35 1/2" | 3/4" |
| | WDD42 | 11 7/8" | 41 1/2" | 3/4" |
| | | | | |
| | | | | |
| | | | | |

| Glass Door | | | | |
|------------|------------|-----------|---------|-------|
| Image | Product | Width | Height | Depth |
| | WG1230 | 11 11/16" | 29 1/2" | 3/4" |
| | WG1530 | 14 11/16" | 29 1/2" | 3/4" |
| | WG1830 | 17 11/16" | 29 1/2" | 3/4" |
| | WG1236 | 11 11/16" | 35 1/2" | 3/4" |
| | WG1536 | 14 11/16" | 35 1/2" | 3/4" |
| | WG1836 | 17 11/16" | 35 1/2" | 3/4" |
| | WG1242 | 11 11/16" | 41 1/2" | 3/4" |
| | WG1542 | 14 11/16" | 41 1/2" | 3/4" |
| | WG1842 | 17 11/16" | 41 1/2" | 3/4" |
| | WDCG243012 | 14 5/8" | 29 1/2" | 3/4" |
| | WDCG243612 | 14 5/8" | 35 1/2" | 3/4" |
| | WDCG244212 | 14 5/8" | 41 1/2" | 3/4" |

| Sample Door | | | | |
|-------------|------------------|-------|--------|-------|
| Image | Product | Width | Height | Depth |
| | SAMPLE DOOR | 12" | 15" | 3/4" |
| | SAMPLE DOOR PACK | 13" | 17" | 7" |
| | | | | |
| | | | | |
| | | | | |
| | | | | |

| Corbels | | | | |
|---------|-------------|-------|--------|-------|
| Image | Product | Width | Height | Depth |
| | CORBEL 8X12 | 8" | 12" | 3" |
| | | | | |
| | | | | |
| | | | | |
| | | | | |
| | | | | |

| Leg Posts | | | | |
|-----------|------------|-------|---------|-------|
| Image | Product | Width | Height | Depth |
| | DLS 4X4X36 | 4" | 34 1/2" | 4" |
| | | | | |
| | | | | |
| | | | | |
| | | | | |
| | | | | |

| Knee Drawer | | | | |
|-------------|---------|-------|--------|-------|
| Image | Product | Width | Height | Depth |
| | DSK2421 | 24" | 7 1/2" | 21" |
| | DSK3021 | 30" | 7 1/2" | 21" |
| | | | | |
| | | | | |
| | | | | |
| | | | | |

| Pullout Tray | | | | |
|--------------|------------------|-------|--------|-------|
| Image | Product | Width | Height | Depth |
| | PULLOUT TRAY 18" | 18" | 4" | 21" |
| | PULLOUT TRAY 24" | 24" | 4" | 21" |
| | PULLOUT TRAY 30" | 30" | 4" | 21" |
| | PULLOUT TRAY 36" | 36" | 4" | 21" |
| | | | | |
| | | | | |
| | | | | |

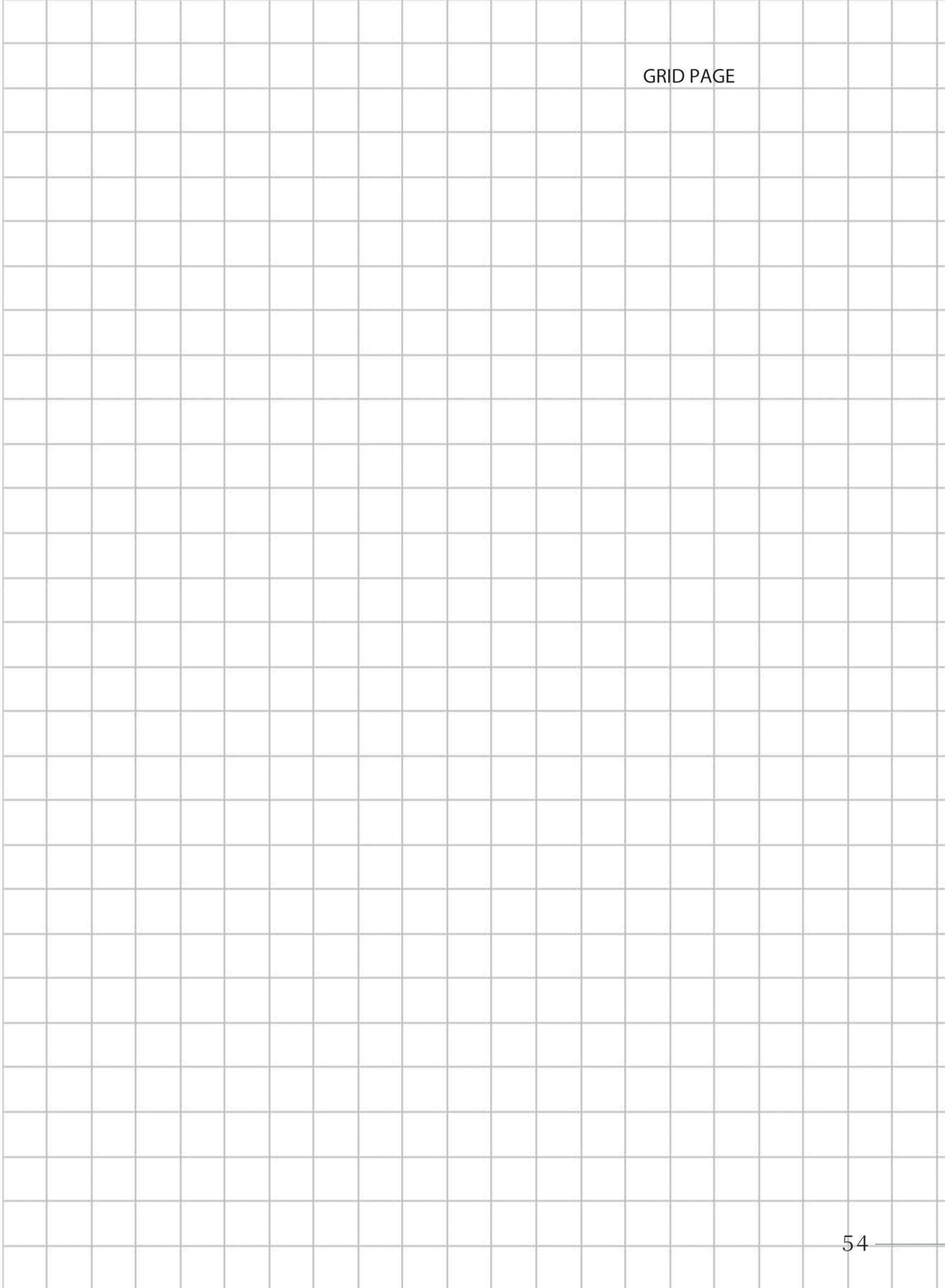
SPECIFICATION DRAWING

| Trash Can | | | | |
|-----------|-----------|---------|---------|----------|
| Image | Product | Width | Height | Depth |
| | Trash Can | 14 1/8" | 15 1/2" | 9 15/16" |
| | | | | |
| | | | | |
| | | | | |
| | | | | |
| | | | | |

| Spray Paint | | | | |
|-------------|---------|--------|--------|--------|
| Image | Product | Width | Height | Depth |
| | PAINT | 2 1/2" | 8" | 2 1/2" |
| | | | | |
| | | | | |
| | | | | |
| | | | | |
| | | | | |

| Touch Up Kit (Paint Pen & Putty Stick) | | | | |
|--|--------------|--------|--------|-------|
| Image | Product | Width | Height | Depth |
| <p>Putty Stick</p> <p>Paint Marker</p> <p>Package Dimensions: 6 1/2" W x 1 1/4" H x 2" D</p> | TOUCH UP KIT | 6 1/2" | 1 1/4" | 2" |
| | | | | |
| | | | | |
| | | | | |
| | | | | |
| | | | | |





Measurement Guide

Before You Start

- Record all measurements in inches (do not round)
- Make sure that all recorded measurements are clearly legible
- Assign one person to determine and record all measurements

Record Ceiling Heights & Wall Lengths

- Draw an outline of the room
- Record the ceiling height on your outline
 - Measuring from the floor to the ceiling or base of the soffit
- Record the wall lengths on your outline
 - Start in one corner of your project area and measure to an adjacent wall
 - Continue around the room until all necessary walls have been measured

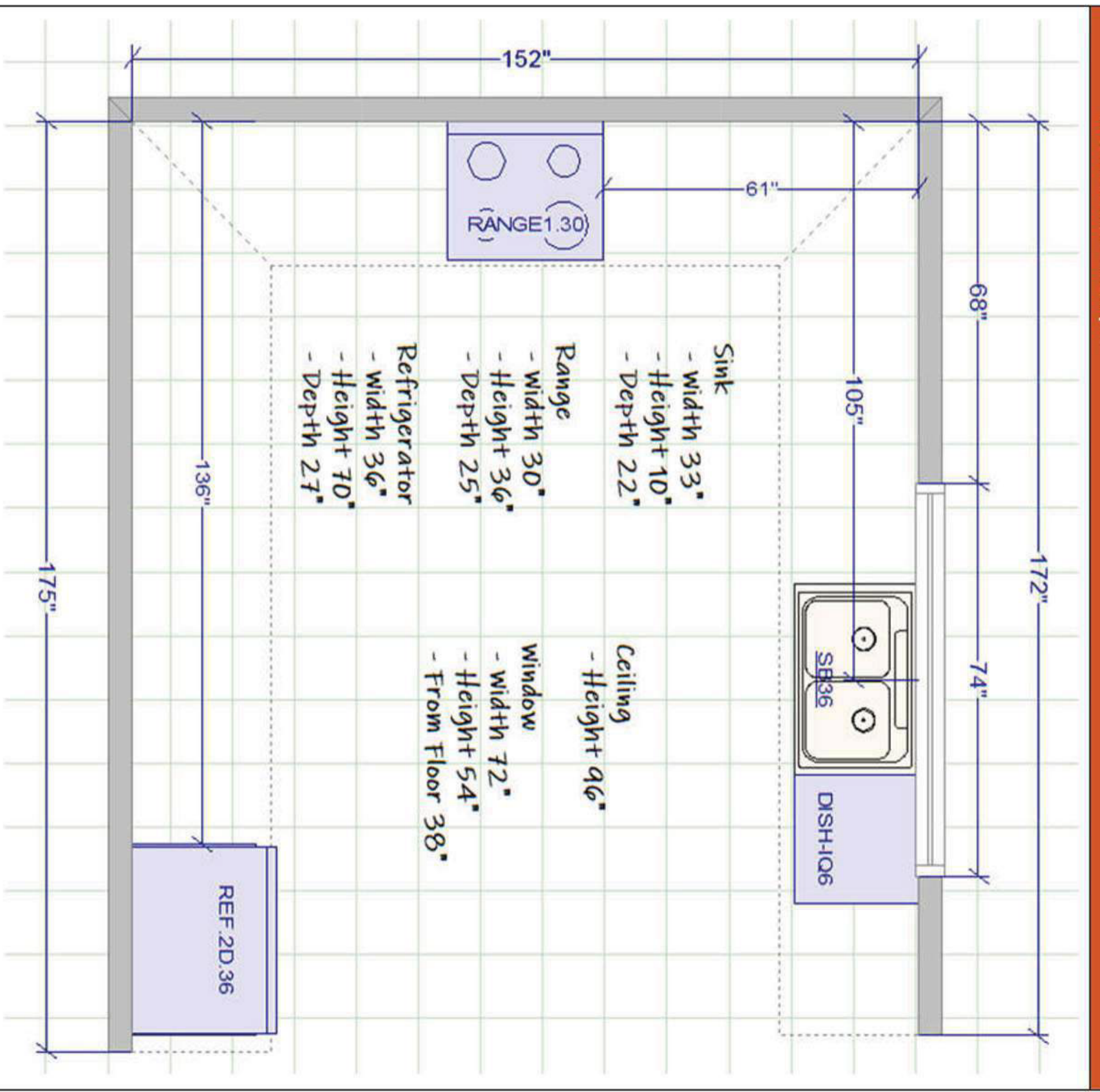
Measure Windows

- Include all window trim as part of the measurements for windows
- Measure and record each window's width, height, and the distance from the window to the floor on the outline
- Add window locations to your outline
 - Start at the corner of any wall that contains a window and measure to the outside trim or edge of the window
 - Continue around the room until all necessary windows have been added to your layout

Measure Appliances

- Measure or research and record the width, height, and depth of your sink and all appliances
- Add the sink location to your outline
 - Start at the corner of the sink wall and measure to the center of your sink
- Add the appliance locations to your outline
 - Note the location of your dishwasher in relation to your sink (left or right) if applicable
 - Start at the corner of the range wall and measure to the edge of your range
 - Start at the corner of the refrigerator wall and measure to the edge of your refrigerator

Room Outline Example



MEASUREMENT GUIDE

Unparalleled Quality. Unrivaled Convenience. Unbeatable Prices.

